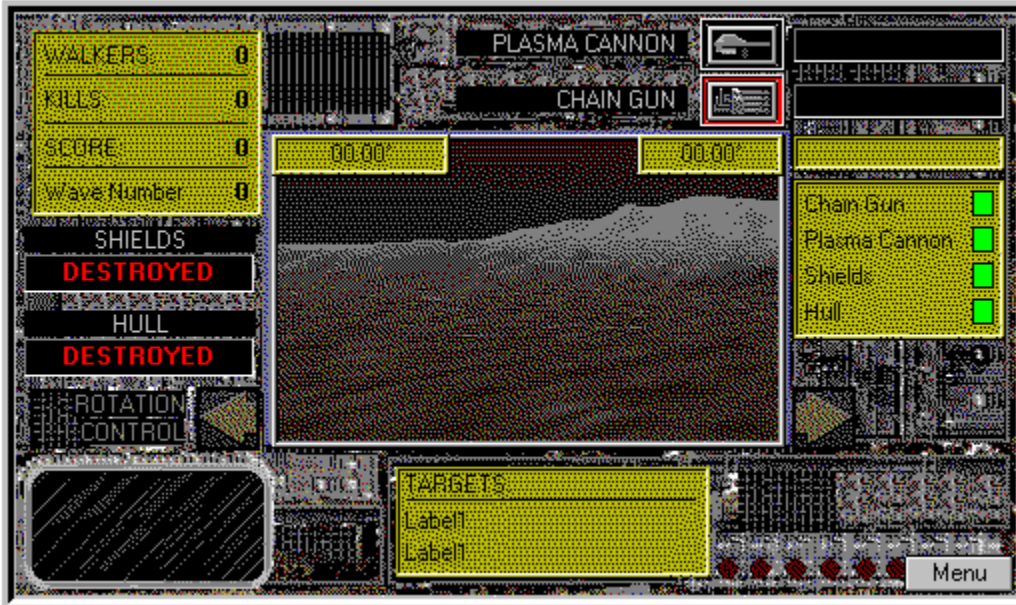


F O R T R E S S

Copyright 1994 Diversions Software

Settings...

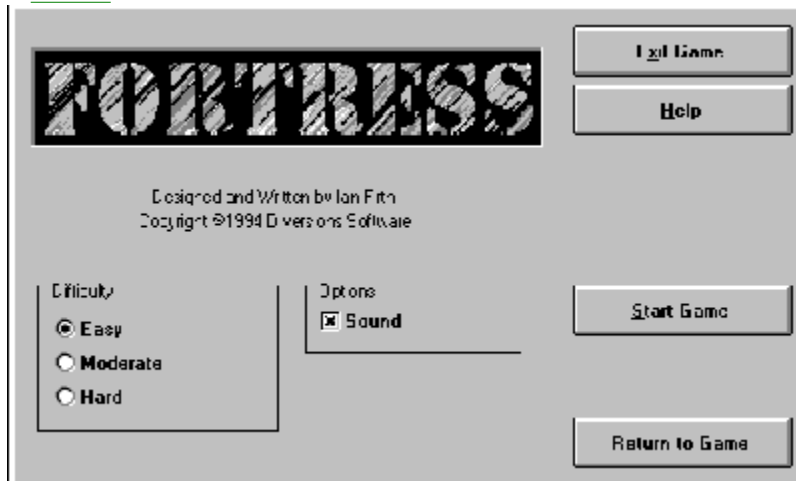
The object of F O R T R E S S is to destroy waves of enemy Walkers that are descending upon your planet surface. You are inside a heavily armed rotating fortress. Walkers will approach your position and try to destroy you. If they reach your position they will detonate and damage your fortress. Use your Plasma Cannon and Chain Gun to blow them away before they do you in. The walkers have little shielding and can be destroyed with two hits from the cannon and 3-4 hits from the gun. Enemy numbers increase as you progress through each wave. Your goal is to finish all ten waves. Good Luck.



- n Menu - Opens the Settings menu and allows you to exit the game
- n Left and Right Arrows - Move the cursor over these arrows to rotate the targeting window of the Fortress. The compass will display your direction, compare this number to the number in the Targets display to locate targets
- n Weapon Selection Buttons - Select either Plasma Cannon or Chain Gun to destroy enemy Walkers
- n Status Display - All relevant data about Weapons and Shields are displayed here and via flood bars
- n Fire at Walkers in the targeting Window by either Right or Left clicking

Settings

[Main...](#)



- n Exit Game - This option will end F O R T R E S S
- n Help - This option opens this help file
- n Start Game - Starts a New Game
- n Return to Game - Returns to the current game

Difficulty - Select how fast the Walkers attack the Fortress by selecting Easy, Moderate or Hard.

Sounds - Enable or Disable Sound Effects

